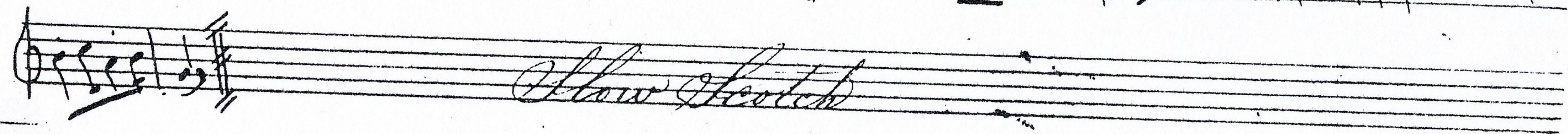
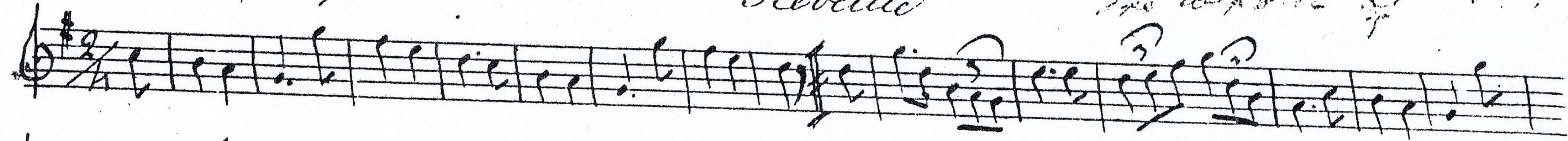
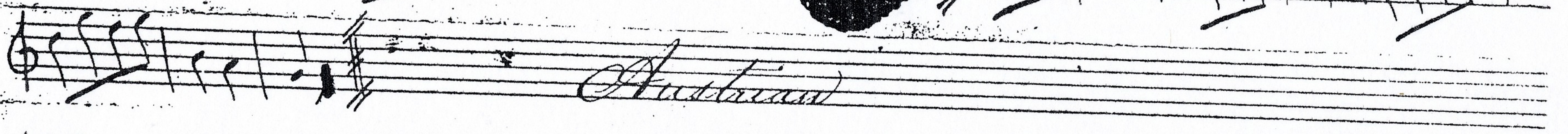


*Three Camps*      *The duty of the United States Army*  
*Reveille*

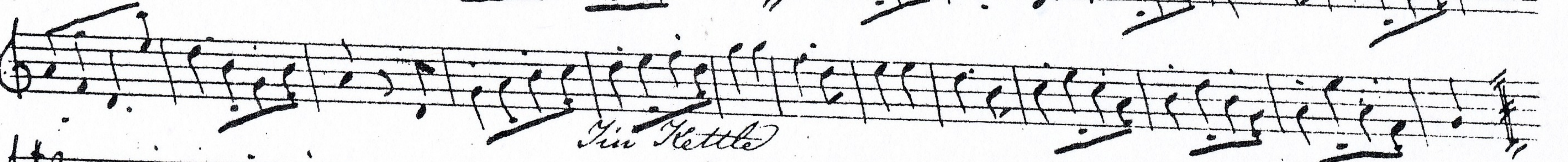
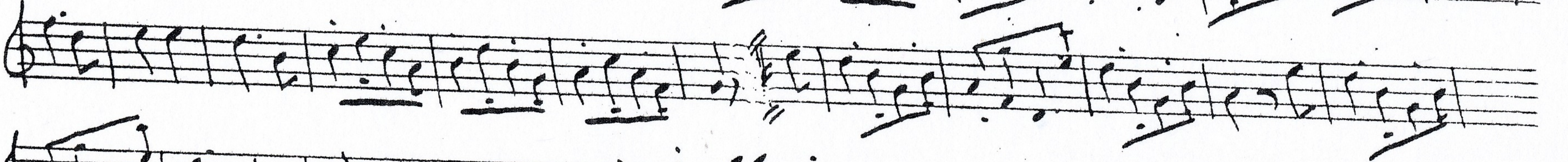
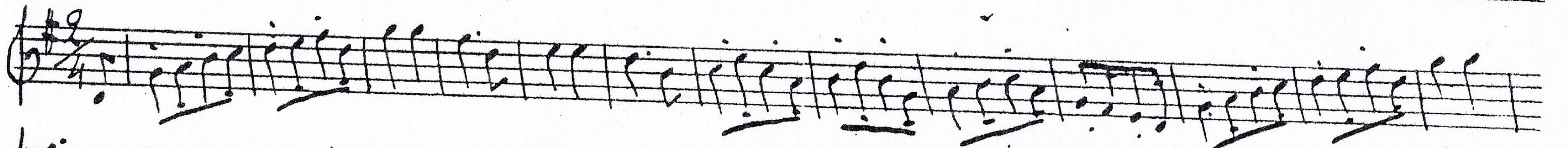
*Two copies of this*



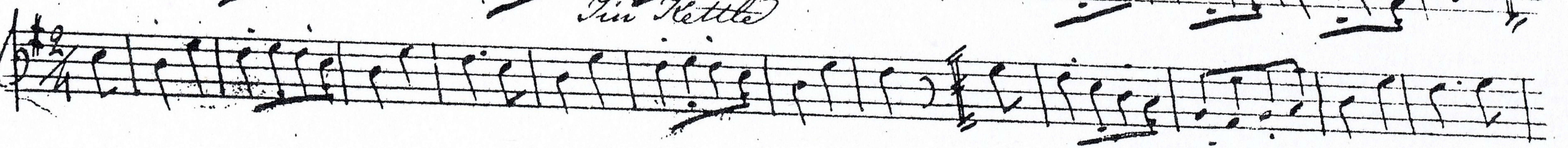
*How Scotch*



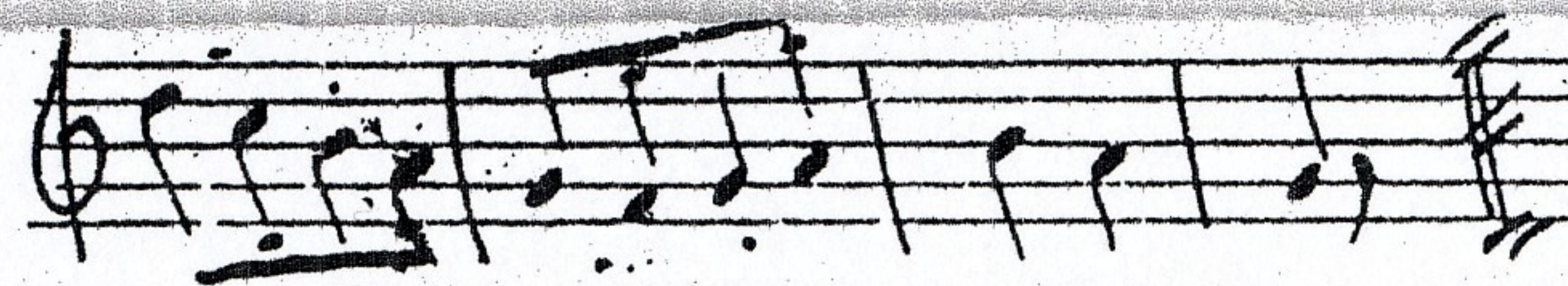
*Austrian*




*Tin Kettle*



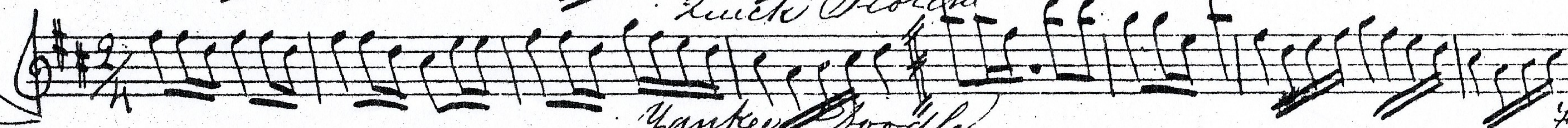
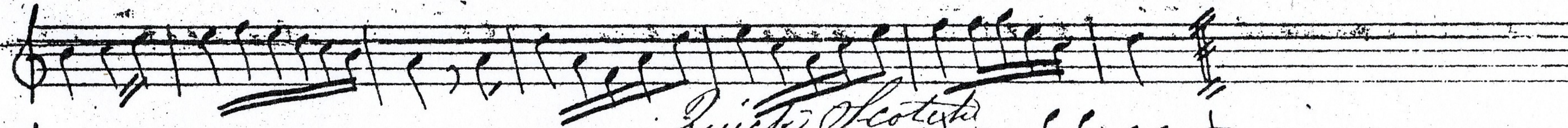
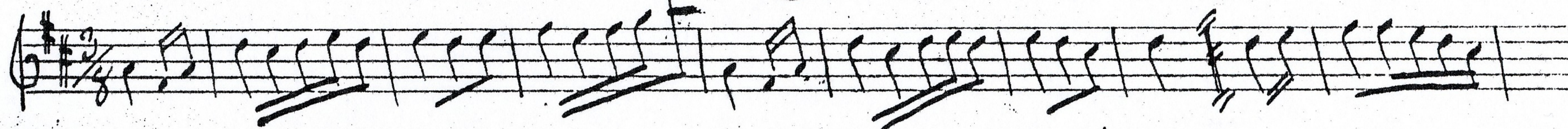




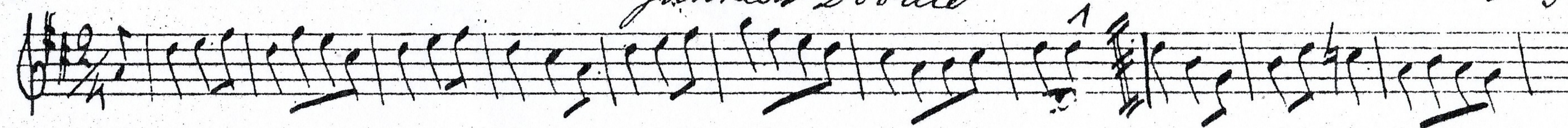
*Session*



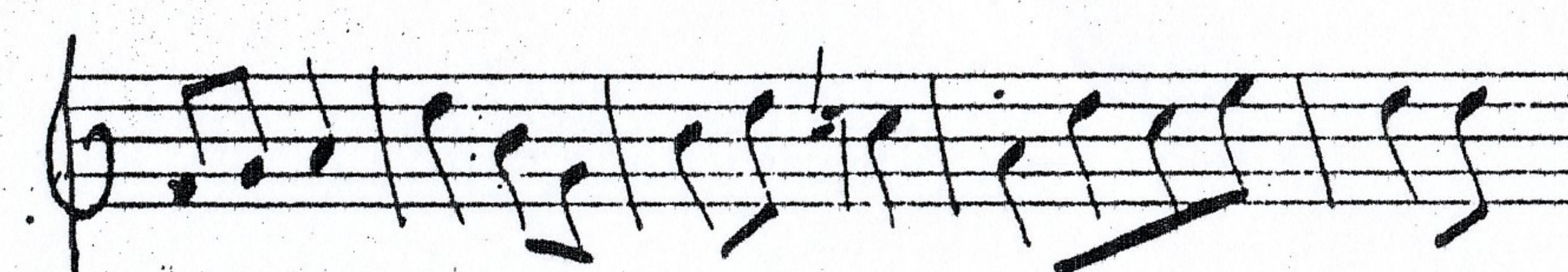
*Dutch*



*Quick Scotch*



*Yankee Doodle*



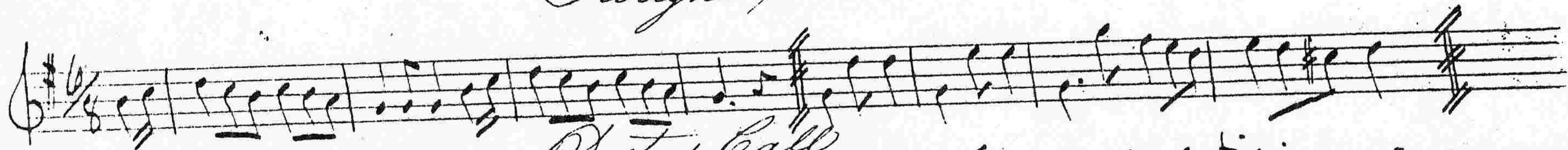
*National Air*

*Charles Henke  
Drum Major*

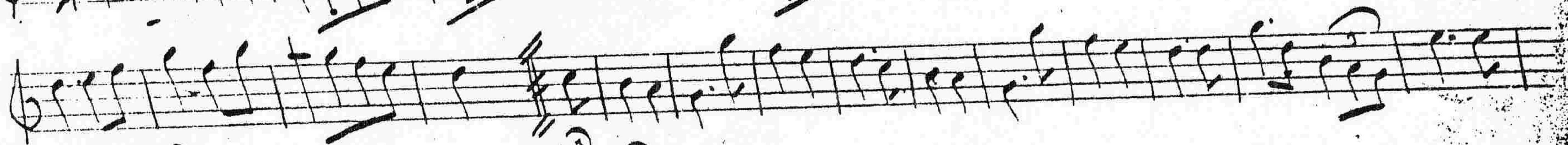
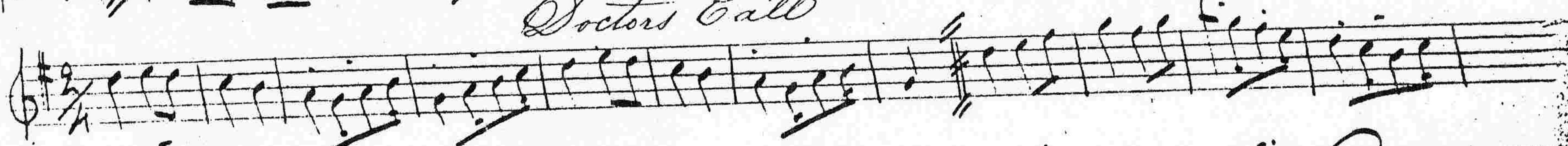
*Fine*



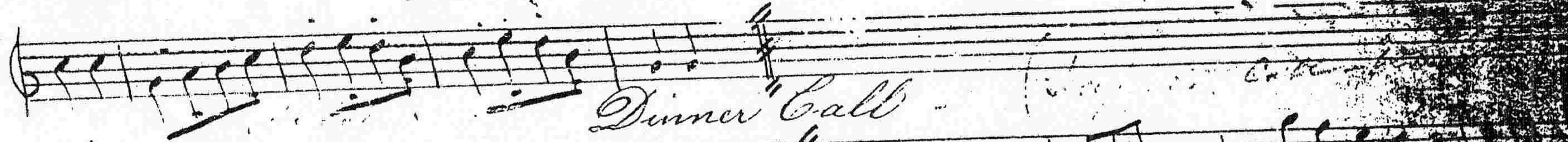
*Fatigue Call*



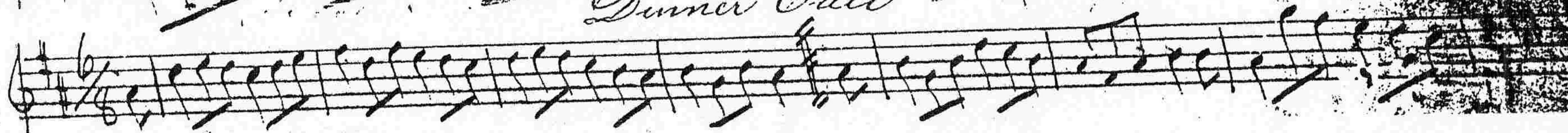
*Doctors Call*



*Breakfast Call*



*Dinner Call*





*Slow Retreat*

Handwritten musical notation for 'Slow Retreat' on a single staff. The notation includes a treble clef, a key signature of one flat (B-flat), and a 3/4 time signature. The melody consists of quarter and eighth notes.

Handwritten musical notation for the first part of 'Adjutants Call' on a single staff. The notation includes a treble clef, a key signature of one flat (B-flat), and a 3/4 time signature. The melody features dotted rhythms and eighth notes.

*Adjutants Call*

Handwritten musical notation for the second part of 'Adjutants Call' on a single staff. The notation includes a treble clef, a key signature of one flat (B-flat), and a 3/4 time signature. The melody continues with eighth and quarter notes.

*Color Call*

Handwritten musical notation for 'Color Call' on a single staff. The notation includes a treble clef, a key signature of one flat (B-flat), and a 3/4 time signature. The melody is characterized by dotted rhythms and eighth notes.

*Rogues March*

Handwritten musical notation for the first part of 'Rogues March' on a single staff. The notation includes a treble clef, a key signature of one flat (B-flat), and a 3/4 time signature. The melody features dotted rhythms and eighth notes.

Handwritten musical notation for the second part of 'Rogues March' on a single staff. The notation includes a treble clef, a key signature of one flat (B-flat), and a 3/4 time signature. The melody continues with eighth and quarter notes.

Handwritten musical notation for the third part of 'Rogues March' on a single staff. The notation includes a treble clef, a key signature of one flat (B-flat), and a 3/4 time signature. The melody concludes with eighth and quarter notes.



Generals Call (or the Commencement)

Handwritten musical notation on a single staff, starting with a treble clef and a 2/4 time signature. The melody consists of eighth and sixteenth notes, with some triplets. The piece concludes with a double bar line.

Church Call

Handwritten musical notation on a single staff, continuing the melody from the first staff. It features similar rhythmic patterns and concludes with a double bar line.

Handwritten musical notation on a single staff, continuing the melody. It includes some triplet markings and concludes with a double bar line.

Handwritten musical notation on a single staff, continuing the melody. It features triplet markings and concludes with a double bar line.

Dead March.

Handwritten musical notation on a single staff, starting with a treble clef and a 2/4 time signature. The melody is slower and more somber than the previous pieces, featuring quarter and eighth notes. It concludes with a double bar line.

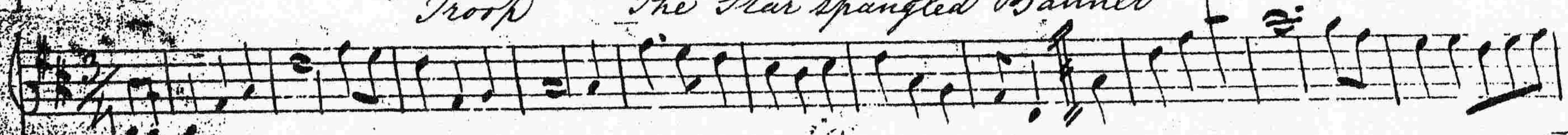
Handwritten musical notation on a single staff, continuing the melody of the 'Dead March'. It concludes with a double bar line.

Merrymans Grave (or March)

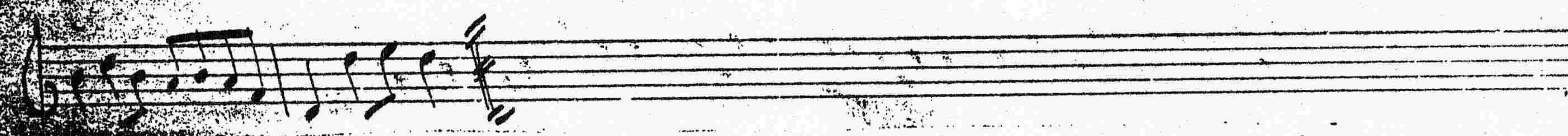
Handwritten musical notation on a single staff, starting with a treble clef and a 6/8 time signature. The melody is lively and rhythmic, featuring eighth and sixteenth notes. It concludes with a double bar line.



*Troop The Star Spangled Banner*



*Hail to the Chief*





— Tattoo — The whole of the following is played <sup>as</sup> a tattoo

*Doubling*

*Quickstep*

*Doubling*

*Common time March*

*Doubling*

*Dutch*





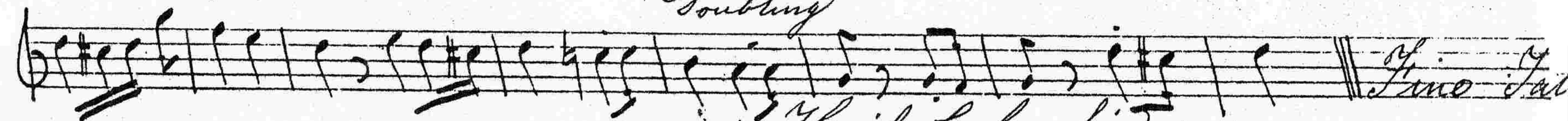
*Lickstep*



*Rolls*

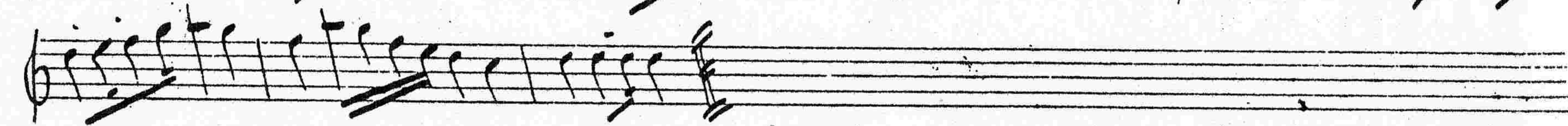
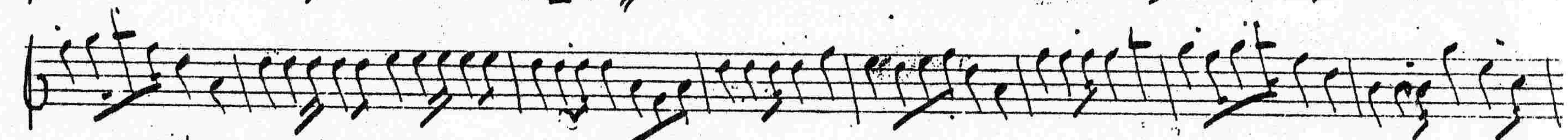


*Doubling*



*Line Fall*

*Hail Columbia*





Composed & arranged by G. Browning, D.M. 2<sup>d</sup> Artillery  
Call for striking *Sento* by De la V. ...

The first two staves of handwritten musical notation. The top staff begins with a treble clef and a 2/4 time signature. The bottom staff begins with a bass clef and a 2/4 time signature. Both staves contain rhythmic patterns of eighth and sixteenth notes, with some notes beamed together.

The last two staves of handwritten musical notation for the first piece. The notation continues with rhythmic patterns. The second-to-last staff ends with a double bar line and a fermata. The final staff concludes with a double bar line and a fermata. To the right of the final staff, the text "End with three accents" is written in cursive.

End with three accents

*Every Mans March*

Handwritten musical notation for 'Every Mans March'. It consists of two staves. The top staff starts with a treble clef, a key signature of one sharp (F#), and a 6/8 time signature. The bottom staff starts with a bass clef. The music is written in a rhythmic, march-like style with many beamed notes.



Respectfully forwarded to you.

Churchill

Monday May 6th 1864

Sergt. C. Kenne Instructor of ~~Artillery~~

Sergt. M. Stone " " Drum

St. Columbus

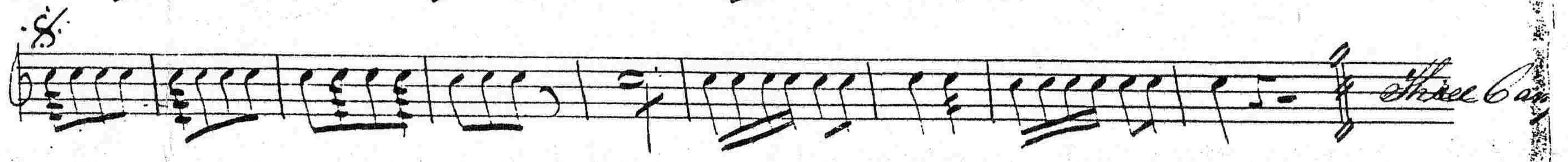
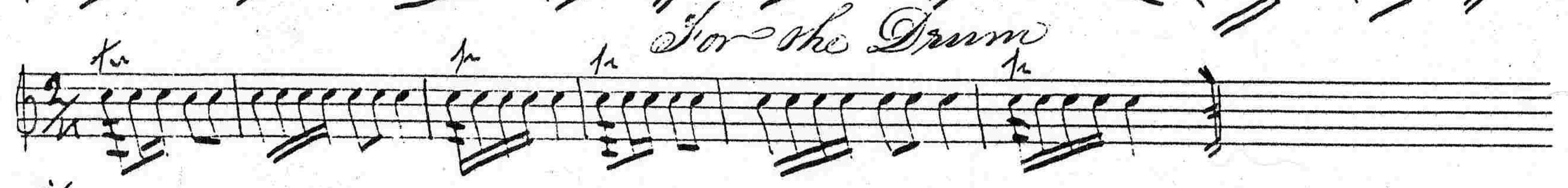
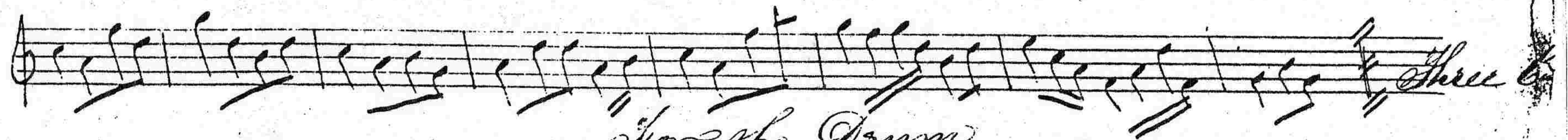
New York

Ag.

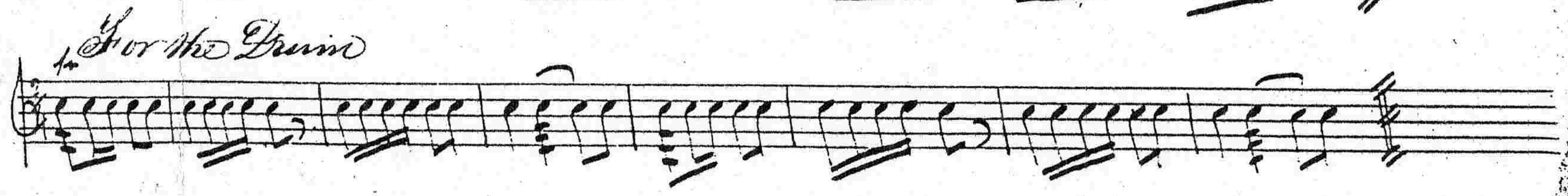


For the Pipe: Detachments. Away

Call for Striking Tents by Detachments:



For the Pipe: Call for Supper of Dan Tucker.





# Washington's March.

Handwritten musical score for "Washington's March" in G major, 2/4 time. The score consists of five staves. The first staff begins with a treble clef and a key signature of one sharp (F#). The music features a rhythmic melody with many beamed eighth notes. Dynamic markings include *f* and *p*. The piece concludes with a double bar line and a repeat sign.

# St. Louis March.

Handwritten musical score for "St. Louis March" in G major, 2/4 time. The score consists of four staves. The first staff begins with a treble clef and a key signature of one sharp (F#). The music features a rhythmic melody with many beamed eighth notes. Dynamic markings include *f*. The piece concludes with a double bar line and a repeat sign.





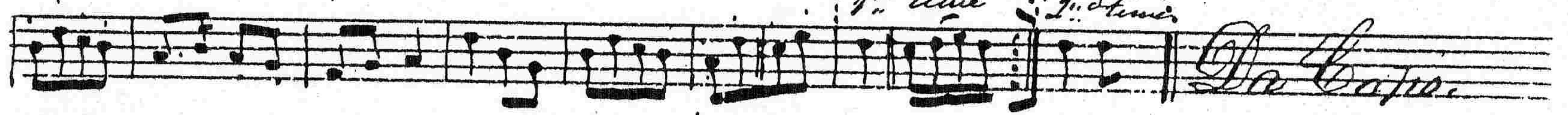
*gva* .....



*gva* ..... *Trio.* .....



*gva* ..... *1st time* ..... *2nd time* .....



NB. The Trio. (or 3<sup>rd</sup> part of Yankee Doodle is usually played with it to give diversity to the melody.

Any drummer, who has learnt to beat the drum properly, will know, at once, the proper beats for all the above national airs and. For those who have not so learnt the drum, the notes would be superfluous, as they would not be understood

*P. S. To*