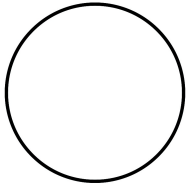
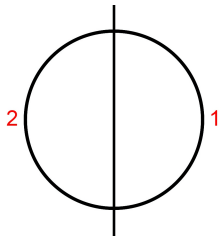
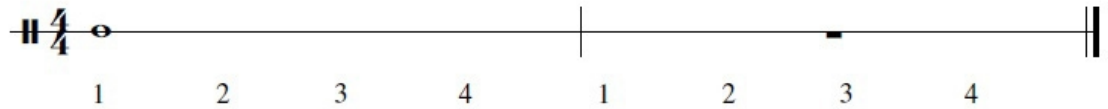


# Introducing Notes and Rests



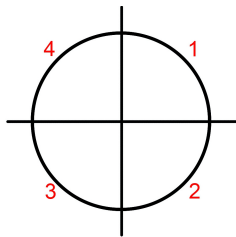
Whole Note

A whole note is equal to four beats in 4/4 time and is notated as a hollow oval note head with no stem. The corresponding whole note rest “hangs” from the staff line.



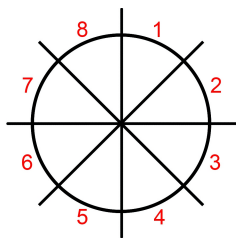
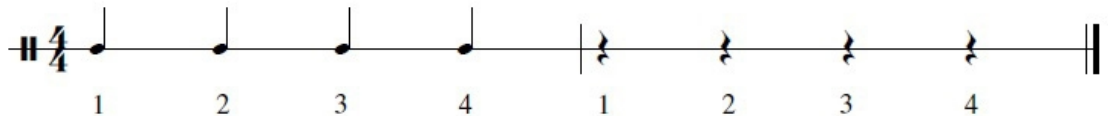
Half Note

A half note is equal to two beats in 4/4 time, half the value of a whole note. Two half notes equal one whole note. A half note is notated with a hollow oval note head and a stem with no flags. The corresponding half note rest “sits” on the staff line.



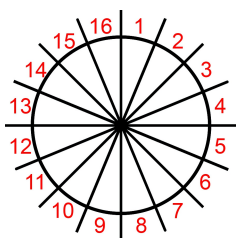
Quarter Note

A quarter note lasts for one beat in 4/4 time, one quarter the value of a whole note. Four quarter notes equal one whole note. A quarter note is notated with a black note head and a stem with no flags. The corresponding quarter note rest is displayed below.



Eighth Note

An eighth note lasts for half a beat in 4/4 time, one eighth the value of a whole note. Eight eighth notes equal one whole note. An eighth note is notated with a black note head, stem and a single flag. The corresponding eighth note rest is displayed below.



Sixteenth Note

A sixteenth note lasts for one quarter of a beat in 4/4 time, one sixteenth the value of a whole note. Sixteen sixteenth notes equal one whole note. A sixteenth note is notated with a black note head, stem and two flags. The corresponding sixteenth note rest is displayed below.

